

JBC

www.jbctools.com

English



Stands

Packing List

The following items should be included:

Stand 1 unit

Connection cable 1m 1 unit

Cable flange

(Only in DR & DS stands) 1 unit

Stand

See references
on the next page



Connection cable 1m

Ref. 0011283



Cable flange

(Only in DR & DS stands)

Ref. 0010154



Manual



All these stands can be connected to the following JBC Control units: DI, DDE, DME.

For T210 & T245

Handles

Ref. AD-SD



For T245-NA

Nitrogen Handle

Ref. DN-SD



For AP130-A

Solder Feed iron

Ref. AP-SD



For PA120-A

Micro Tweezers

Ref. PA-SD



For HT420-A

Thermal Tweezers

Ref. HT-SD



For DS360-A

Micro Desoldering iron

Ref. DS-SD



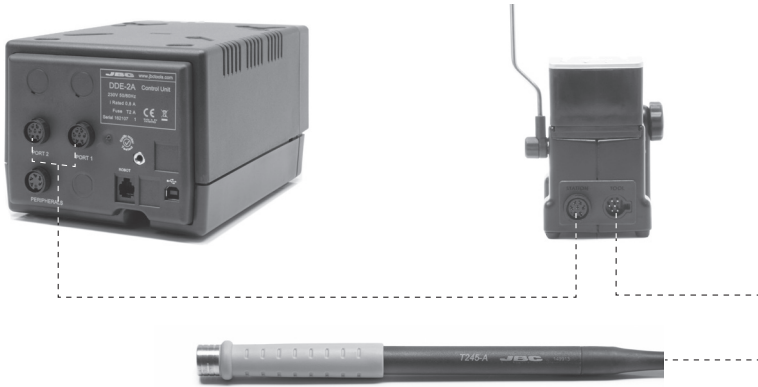
For DR560-A

Desoldering iron

Ref. DR-SD



Features

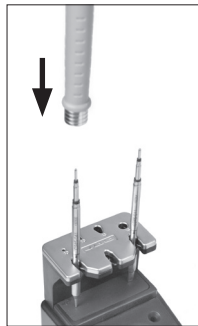


Quick Tip Changer

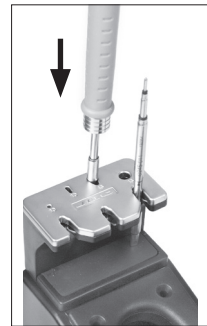
With the JBC system, the cartridge can be changed quickly, without turning off the station, so you have multiple soldering irons in one.



1. Insert the cartridge connected to the handpiece in a slot and pull up slightly to release it.




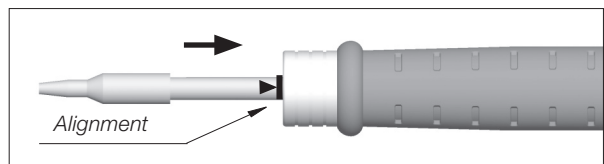
2. Insert the cartridge to be used into the handpiece, push slightly and remove it from the slot.



3. Press the cartridge into the appropriate hole according to the tip's shape.

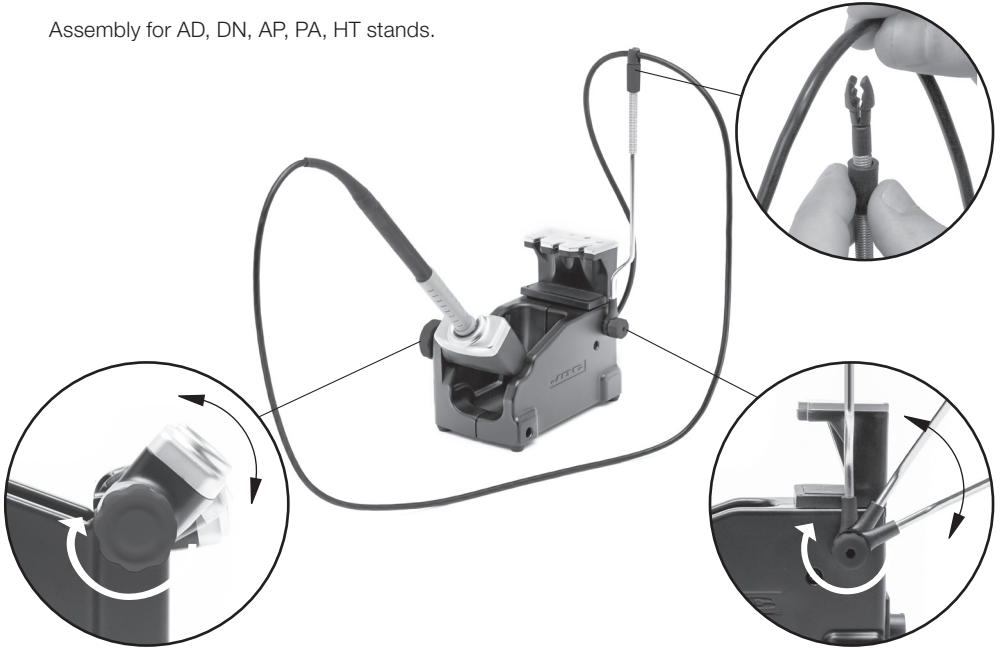
Important

It is essential to insert the cartridge till the end for a good connection. Use the mark  as reference.

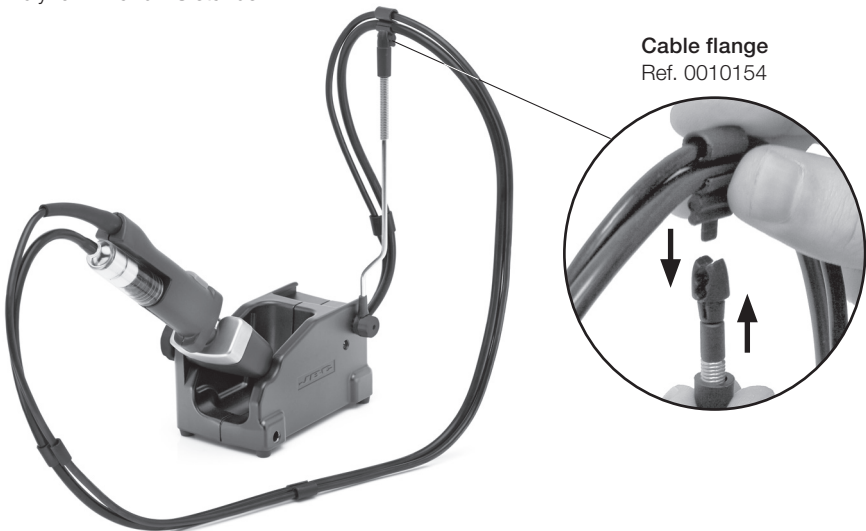


Cable collector assembly and adjustable tool holder

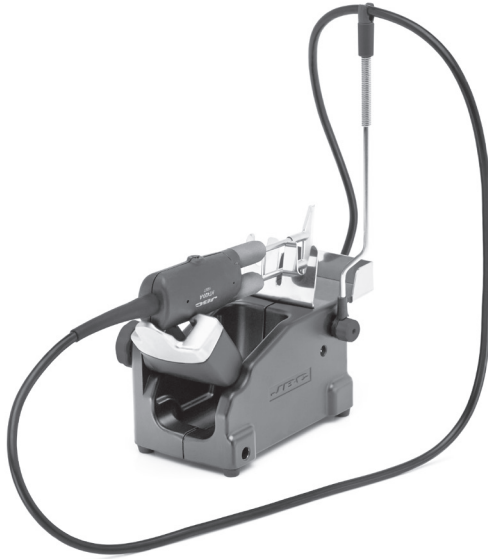
Assembly for AD, DN, AP, PA, HT stands.



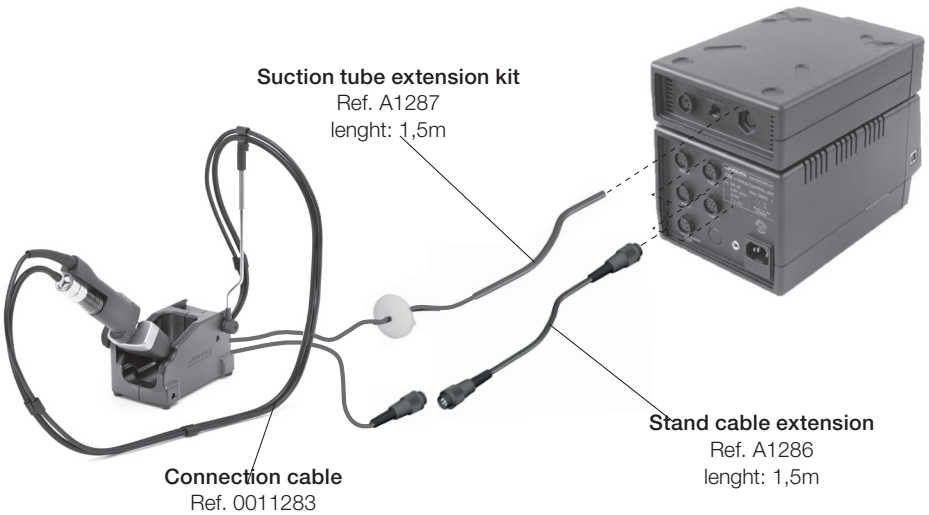
Assembly for DR and DS stands.



HT-SD tool placement for big tips



Accessories



Maintenance

Before carrying out maintenance or storage, always unplug the stand from the station and the tool.

- Use a damp cloth to clean the stand. Alcohol can be used only to clean the metal parts.
- Check periodically that the metal parts of the tool/stand are clean in order to have a good detection when the tool is in the stand.
- Periodically check all cables and tubes connected.
- Replace any defective or damaged piece. Use original JBC spare parts only.
- Repairs should be performed only by a JBC authorized technical service.





Warranty

JBC's 2 year warranty covers this equipment against all manufacturing defects, including the replacement of defective parts and labour.

Warranty does not cover product wear due to use or mis-use.

In order for the warranty to be valid, equipment must be returned, postage paid, to the dealer where it was purchased.



This product should not be thrown in the garbage.
In accordance with the European directive 2002/96/EC, electronic equipment must be returned to an authorized recycling facility at the end of its life.