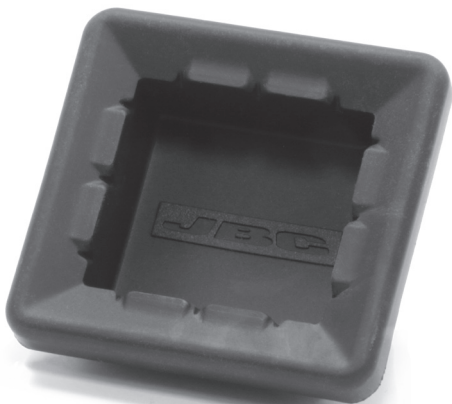


# **JBC**

[www.jbctools.com](http://www.jbctools.com)



**ESD Wiper for  
Compact Stations**

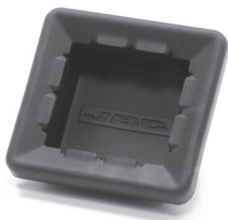
Ref. CL0160

# Packing List

The following items should be included:

**ESD Wiper for Compact Stations** ..... 1 unit

Ref. CL0160



**Manual** ..... 1 unit

Ref. 0017578



## Changing the Wiper

1. Pull out the damaged or dirty wiper.



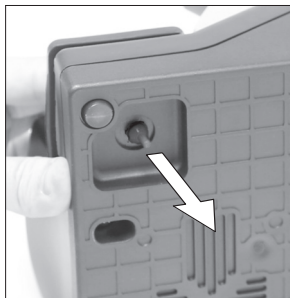
2. Insert the new one making sure that the JBC logo is the right way round.



3. Press the wiper down to fix it in place.



4. Pull on the tab to secure it.



## Specifications

- |               |                  |
|---------------|------------------|
| - Weight:     | 24 gr. (0.84 oz) |
| - Dimensions: | 56 x 53 x 38 mm  |

# JBC

---

### Warranty

JBC's 2 year warranty covers this device against all manufacturing defects, including the replacement of defective parts and labour.

Warranty does not cover product wear or its misuse.

In order for the warranty to be valid, equipment must be returned, postage paid, to the dealer where it was purchased.

---



This product should not be thrown in the garbage. In accordance with the European directive 2002/96/EC, electronic equipment at the end of its life must be collected and deposited at an authorized recycling facility.

**[www.jbctools.com](http://www.jbctools.com)**

0017578-0916